

External Quality Assurance (EQA) of G6PD Quantitative Test

Survey No. : RH2013-03

Sample sent on : 2013/03/04

Reporting deadline : 2013/03/11

Sample sent : [13 set](#)

Results reported (%) : 13 (100%)

- | | |
|---|---|
| <p>1. Summary report on this EQA survey</p> <p>2. The distribution of G6PD reported in this survey</p> <p>3. The distribution of Hb reported in this survey</p> | <p>4. Long term observation of inter laboratory CV vs. surveys</p> <p>5. Long term observation of inter laboratory CV vs. G6PD activities</p> <p>6. Deviation graph for individual laboratory</p> |
|---|---|

Referral Hosp. G6PD and Hemoglobin(Hb) Quantitative Test Results

Lab	Referral Hosp.	Receive (day)	Report (day)	S 1		S 2		S 3		Hb 1		Hb 2		Hb 3	
				(U/gHb)	SDI	(U/gHb)	SDI	(U/gHb)	SDI	(g/dL)	SDI	(g/dL)	SDI	(g/dL)	SDI
F01	F01	0	2	9.5	0.2	3.8	-0.3	8.0	-0.5	2.1	0.0	2.1	0.0	2.7	0.0
F02	F02	1	2	8.6	-0.5	4.5	0.8	9.4	0.8	2.5	2.0	2.7	3.0	3.2	2.5
F03	F03	1	5	10.0	0.5	4.1	0.2	8.8	0.3	2.0	-0.5	2.0	-0.5	2.5	-1.0
F04	F04	1	7	9.0	-0.2	3.8	-0.3	7.8	-0.6	2.2	0.5	2.2	0.5	2.7	0.0
F05	F05	3	4	11.6	1.8	4.7	1.2	10.1	1.5	2.0	-0.5	2.0	-0.5	2.5	-1.0
F06	F06	2	4	10.3	0.8	4.0	0.0	9.3	0.7	2.2	0.5	2.1	0.0	2.7	0.0
F07	F07	1	7	11.2	1.5	5.4	2.3	10.2	1.5	2.1	0.0	2.1	0.0	2.6	-0.5
F08	F08	1	4	9.4	0.1	4.1	0.2	8.9	0.4	1.9	-1.0	1.8	-1.5	2.6	-0.5
F09	F09	1	5	7.3	-1.5	3.1	-1.5	7.0	-1.4	2.1	0.0	2.2	0.5	2.7	0.0
F10	F10	1	1	9.0	-0.2	3.9	-0.2	8.1	-0.4	2.3	1.0	2.2	0.5	2.8	0.5
F11	F11	1	8	8.4	-0.7	3.5	-0.8	7.6	-0.8	2.1	0.0	2.0	-0.5	2.6	-0.5
F12	F12	1	5	7.8	-1.2	3.3	-1.2	7.2	-1.2	2.4	1.5	2.4	1.5	2.9	1.0
F13	F13	1	7	8.5	-0.6	3.6	-0.7	7.8	-0.6	1.9	-1.0	2.0	-0.5	2.5	-1.0

Total participating laboratories = 13

Median	-	1	5	9.0	3.9	8.1	2.1	2.1	2.7
Range	-	0-3	1-8	7.3-11.6	3.1-5.4	7.0-10.2	1.9-2.5	1.8-2.7	2.5-3.2
n for Mean	-	-	-	13	13	13	13	13	13
Mean	-	-	-	9.3	4.0	8.5	2.1	2.1	2.7
S.D.	-	-	-	1.3	0.6	1.1	0.2	0.2	0.2
C.V.	-	-	-	13.5%	15.4%	12.4%	8.4%	10.4%	7.2%
Reference	-	-	-	12.5	4.8	11.0	2.2	2.3	2.7

Note:

- 1). : Outlier (this result has been dropped and was not included in calculation of Mean, SD and CV).
- 2). Standard Deviation Index (SDI) = (Individual Result - Mean) / SD
- 3). The reference values were determined by using [Trinity Biotech 345-UV](#) reagent at the QC reference Lab.

[Ordered by Referral Hosp.](#)



Newborn Screening QA Program
[Preventive Medicine Foundation](#)



[Newborn Screening Reference Center](#)
[National Institutes of Health](#)



[University of the Philippines](#)

P.O. Box 26-624, Taipei, Taiwan 10699

Tel : + 886-2-2703-6080; j@Fax : +886-2-2703-6070

625 Pedro Gil St., Ermita, Manila 1000, Philippines

Fax : +
632-522-4396;

info@nsrc-nih.org.ph

g6pd@g6pd.tw

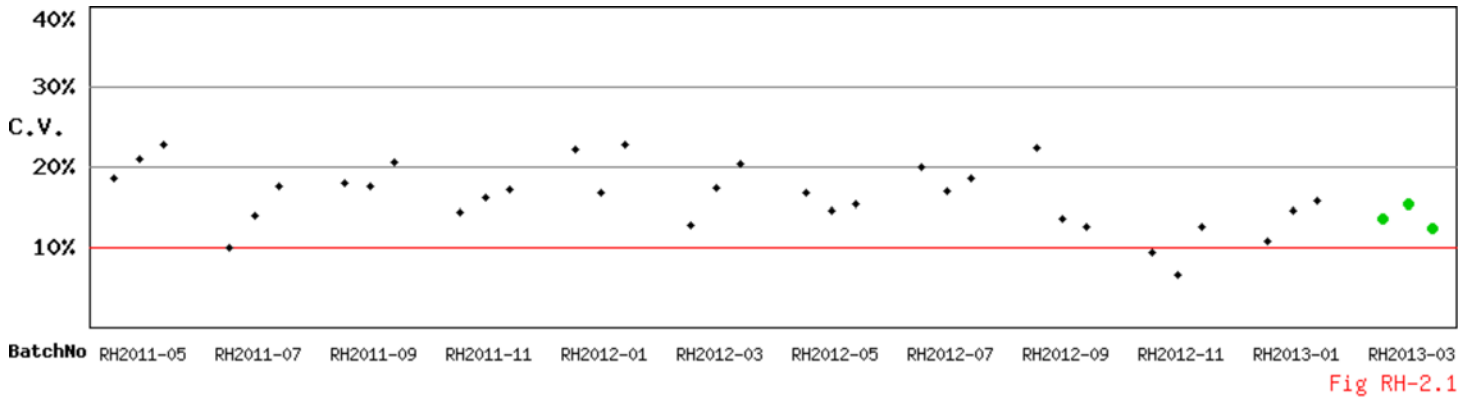
updated : 15 Mar, 2013

[\[HOME\]](#)

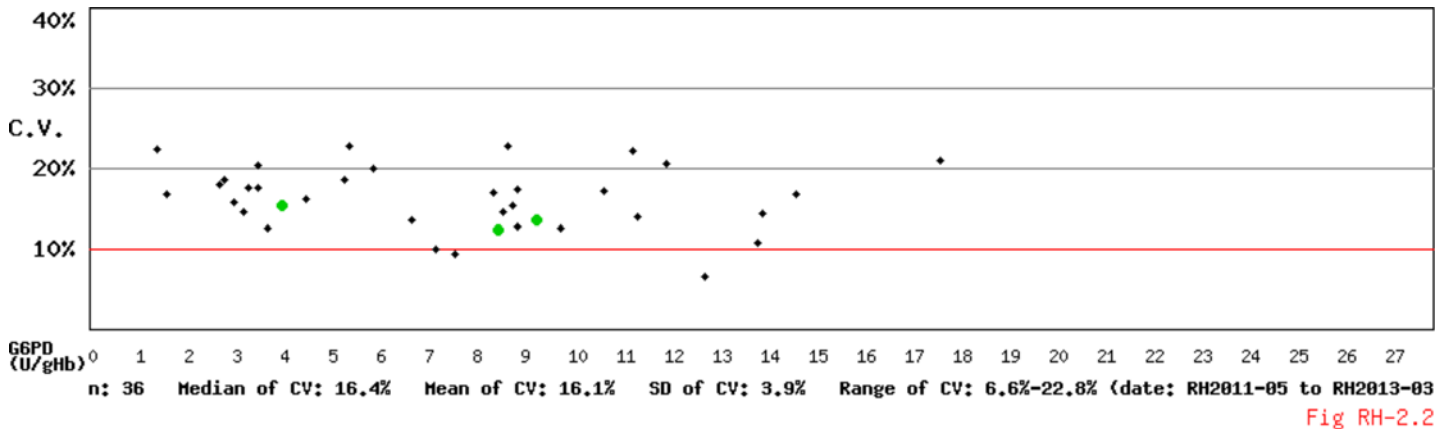
Long Term Observation of G6PD QA Survey for Confirmatory Hosp.

Survey No : RH2013-03 (in green ●)

- Total participants' CV result plotted against surveys



- Total participants' CV result plotted against G6PD activities

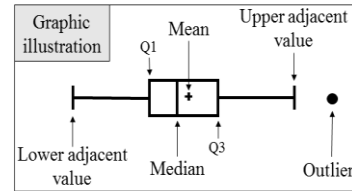


Kwang-Jen Hsiao, Ph.D.
Preventive Medicine Foundation
P.O. Box 26-624
Taipei, Taiwan, 10699

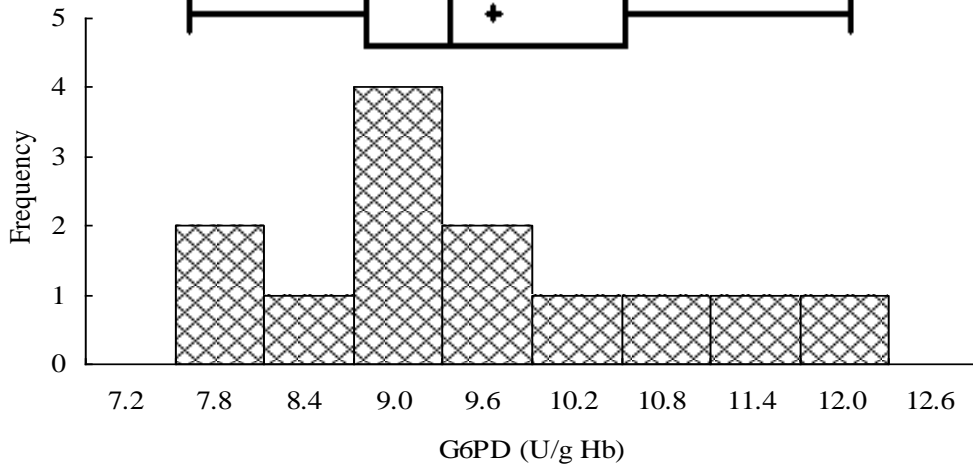
Tel : +886-2-2703-6080
Fax : +886-2-2703-6070
E-mail : g6pd@g6pd.tw
URL : <http://eqa.g6pd.tw>

External Quality Assurance -G6PD

Survey No :RH2013-03

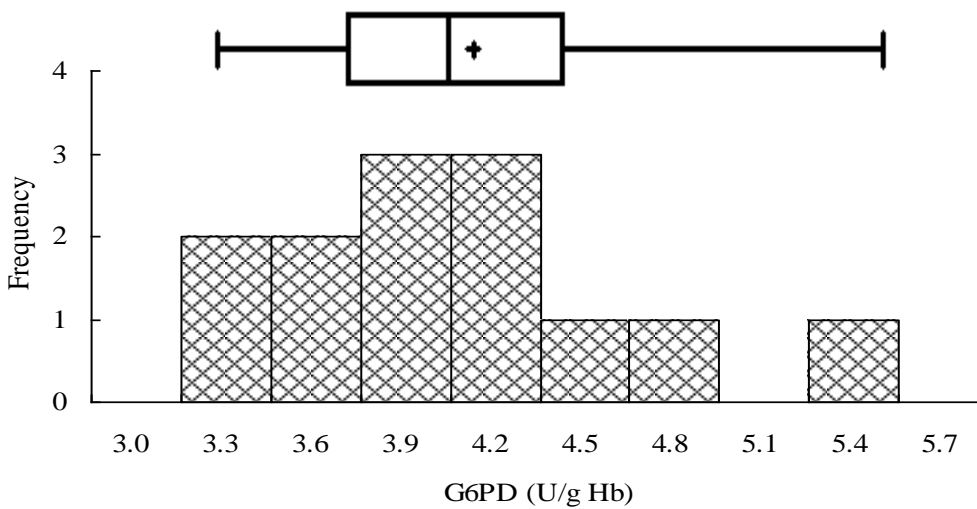


● Outlier (out of 3 SD)



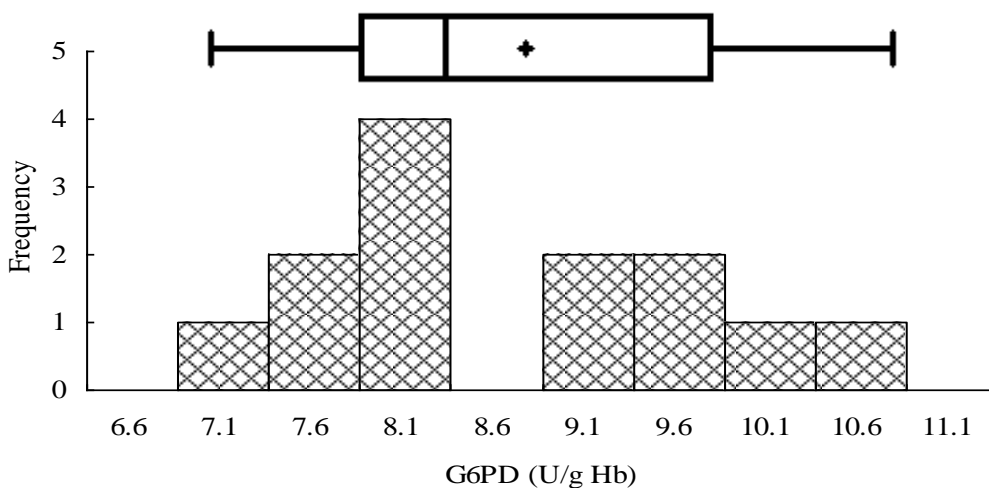
Sample 1

Median = 9.0 (n = 13)
Mean = 9.3 (n = 13)
S.D. = 1.3
Ref. Value* = 12.5



Sample 2

Median = 3.9 (n = 13)
Mean = 4.0 (n = 13)
S.D. = 0.6
Ref. Value* = 4.8



Sample 3

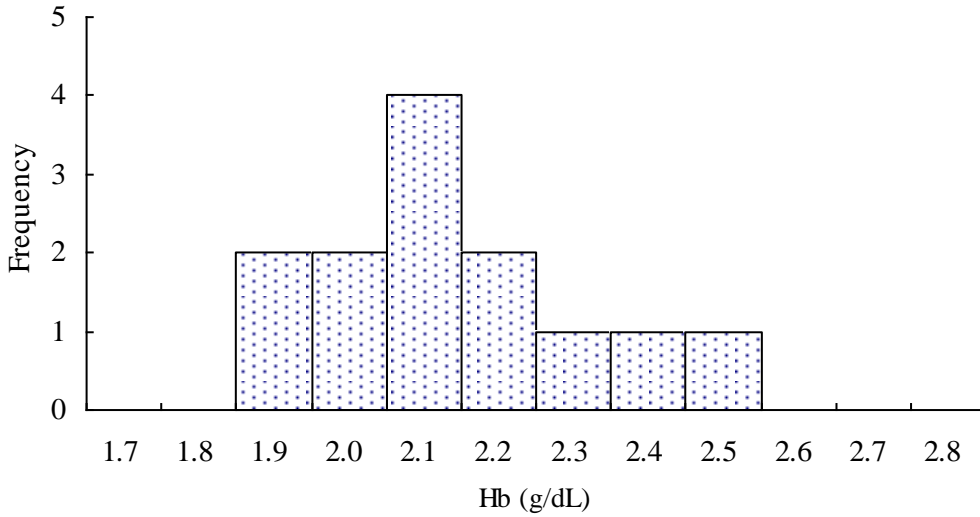
Median = 8.1 (n = 13)
Mean = 8.5 (n = 13)
S.D. = 1.1
Ref. Value* = 11.0

* The reference values were determined by using Trinity Biotech 345-UV reagent at the QC reference Lab.

Fig PHIQ-3

External Quality Assurance-Hb

Survey No : RH2013-03



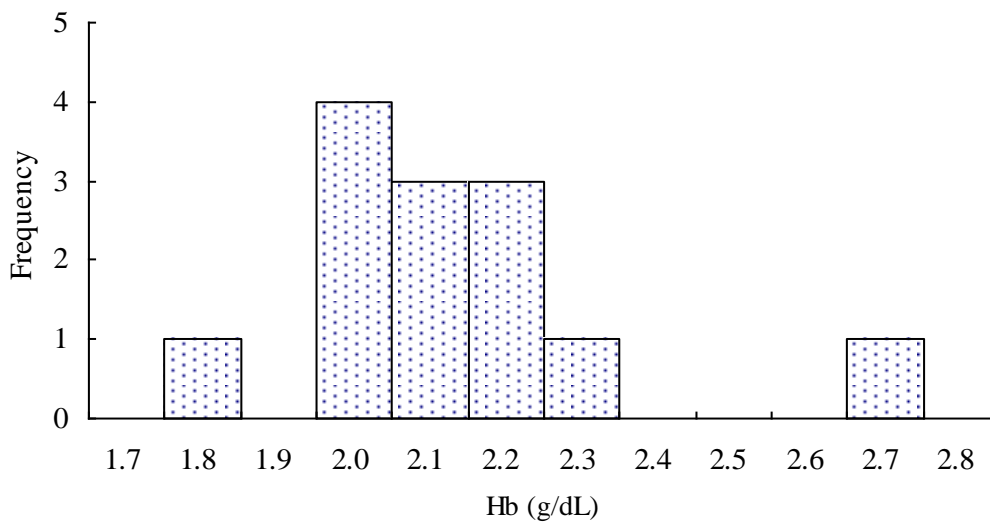
Sample 1

Median = 2.1 (n = 13)

Mean = 2.1 (n = 13)

S.D. = 0.2

Ref. Value = 2.2



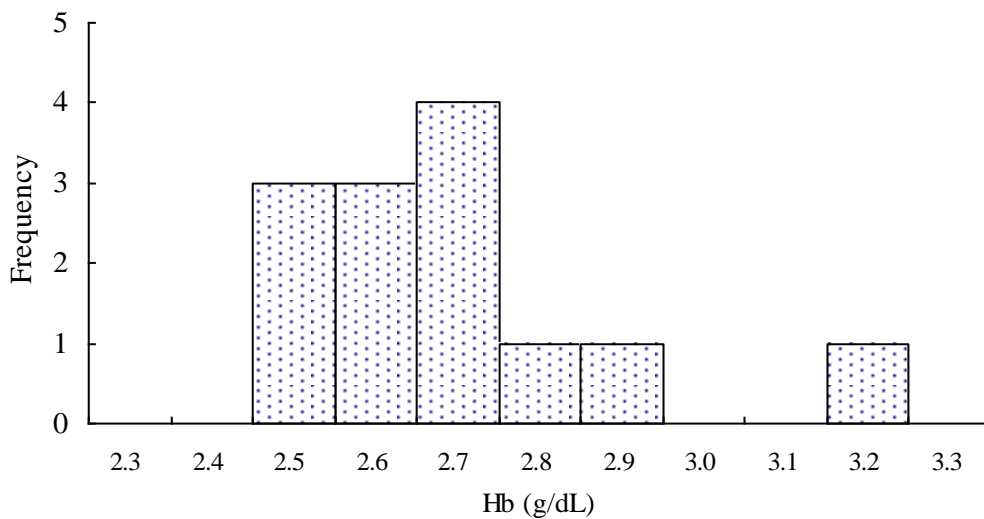
Sample 2

Median = 2.1 (n = 13)

Mean = 2.1 (n = 13)

S.D. = 0.2

Ref. Value = 2.3



Sample 3

Median = 2.7 (n = 13)

Mean = 2.7 (n = 13)

S.D. = 0.2

Ref. Value = 2.7

Fig PHIQ-4