

102年度 G6PD 確診醫院第四次院際品管結果報告

送檢批號: RH2013-07

檢體寄出日期: 2013 年 07 月 01 日

報告回收截止日期: 2013 年 07 月 08 日

寄出份數: 22 份

回收份數(比率): 22 (100%)

1. [本次各確診醫院 G6PD 及血色素 \(Hb\) 定量檢驗品管結果一覽表](#)
2. [本次確診醫院 G6PD 定量檢驗院際品管結果分佈圖](#)
3. [本次確診醫院血色素 \(Hb\) 定量檢驗院際品管結果分佈圖](#)
4. [至本次歷年品管檢體測定結果之實驗室間 C.V. 分佈圖](#)
5. [至本次歷年 品管檢體 G6PD 活性值與實驗室間 C.V. 分佈圖](#)
6. [至本次各機構 SDI 分佈圖列表](#)

各確診醫院G6PD及血色素(Hb)定量檢驗品管結果一覽表

檢驗單位代碼	確診醫院代碼	檢體寄送時效(天)	檢驗報告時效(天)	S 1		S 2		S 3		Hb 1		Hb 2		Hb 3	
				(U/gHb)	SDI	(U/gHb)	SDI	(U/gHb)	SDI	(g/dL)	SDI	(g/dL)	SDI	(g/dL)	SDI
RH01	RH01 RH05	0	1	5.0	-1.8	9.2	-1.0	17.2	-0.2	2.5	0.0	2.2	0.0	2.4	0.0
RH02	RH02	0	4	6.1	1.0	9.8	-0.1	16.8	-0.6	2.4	-1.0	2.2	0.0	2.3	-1.0
RH03	RH03	1	2	5.8	0.2	10.3	0.6	16.8	-0.6	2.4	-1.0	2.1	-1.0	2.3	-1.0
RH04	RH04	1	4	5.6	-0.3	9.6	-0.4	17.5	0.1	2.5	0.0	2.2	0.0	2.3	-1.0
RH06	RH06	1	4	5.3	-1.0	9.6	-0.4	16.5	-0.9	2.5	0.0	2.1	-1.0	2.4	0.0
RH07	RH07	1	4	5.7	0.0	9.9	0.0	16.8	-0.6	2.6	1.0	2.3	1.0	2.4	0.0
RH08	RH08	1	3	5.2	-1.3	9.3	-0.9	16.0	-1.4	2.5	0.0	2.0	-2.0	2.4	0.0
RH09	RH09	1	2	6.3	1.5	10.4	0.7	18.5	1.1	2.4	-1.0	2.2	0.0	2.4	0.0
RH10	RH10	1	7	5.5	-0.5	9.7	-0.3	16.9	-0.5	2.5	0.0	2.1	-1.0	2.3	-1.0
RH12	RH12	1	4	5.2	-1.3	9.6	-0.4	17.1	-0.3	2.4	-1.0	2.2	0.0	2.3	-1.0
RH13	RH13	1	2	5.8	0.2	10.0	0.1	17.5	0.1	2.4	-1.0	2.1	-1.0	2.3	-1.0
RH14	RH14	1	4	5.1	-1.5	9.8	-0.1	16.7	-0.7	2.5	0.0	2.1	-1.0	2.4	0.0
RH18	RH18	0	3	6.4	1.8	10.4	0.7	18.6	1.2	2.5	0.0	2.2	0.0	2.4	0.0
RH19	RH19	1	4	5.4	-0.8	9.8	-0.1	15.9	-1.5	2.5	0.0	2.2	0.0	2.5	1.0
A0189	A0189	1	4	6.0	0.8	11.8	2.7	18.8	1.4	2.5	0.0	2.2	0.0	2.4	0.0
A0203	A0203	1	3	5.7	0.0	9.3	-0.9	16.4	-1.0	2.4	-1.0	2.2	0.0	2.4	0.0
G026	G026	1	7	6.3	1.5	10.4	0.7	19.1	1.7	2.5	0.0	2.3	1.0	2.4	0.0
CL001	RH16	0	7	5.4	-0.8	9.2	-1.0	16.9	-0.5	2.4	-1.0	2.2	0.0	2.3	-1.0
CL002	RH11 RH17 G031 B005 CL016	0	1	5.4	-0.8	9.4	-0.7	17.6	0.2	2.3	-2.0	2.1	-1.0	2.2	-2.0
B001	B001	0	3	6.0	0.8	9.2	-1.0	18.2	0.8	2.5	0.0	2.3	1.0	2.4	0.0
CL014	CL014	1	7	6.2	1.3	11.3	2.0	19.6	2.2	2.5	0.0	2.2	0.0	2.4	0.0
CL015B	CL015B	1	1	5.1	-1.5	9.6	-0.4	16.5	-0.9	2.4	-1.0	2.0	-2.0	2.3	-1.0

Total participating laboratories = 22

Median	-	1	4	5.7	9.8	17.0	2.5	2.2	2.4
Range	-	0-1	1-7	5.0-6.4	9.2-11.8	15.9-19.6	2.3-2.6	2.0-2.3	2.2-2.5
n for Mean	-	-	-	22	22	22	22	22	22
Mean	-	-	-	5.7	9.9	17.4	2.5	2.2	2.4
S.D.	-	-	-	0.4	0.7	1.0	0.1	0.1	0.1
C.V.	-	-	-	7.7%	6.7%	5.9%	2.7%	3.9%	2.8%
Reference	-	-	-	5.7	9.2	17.9	2.4	2.2	2.3

Note:

- 1).           : Outlier (this result has been dropped and was not included in calculation of Mean, SD and CV).
- 2). Standard Deviation Index (SDI) = (Individual Result - Mean) / SD
- 3). The reference values were determined by using [Trinity Biotech 345-UV](#) reagent at the QC reference Lab.

# Long Term Observation of G6PD QA Survey for Confirmatory Hosp.

Survey No : RH2013-07 (in green ●)

- Total participants' CV result plotted against surveys

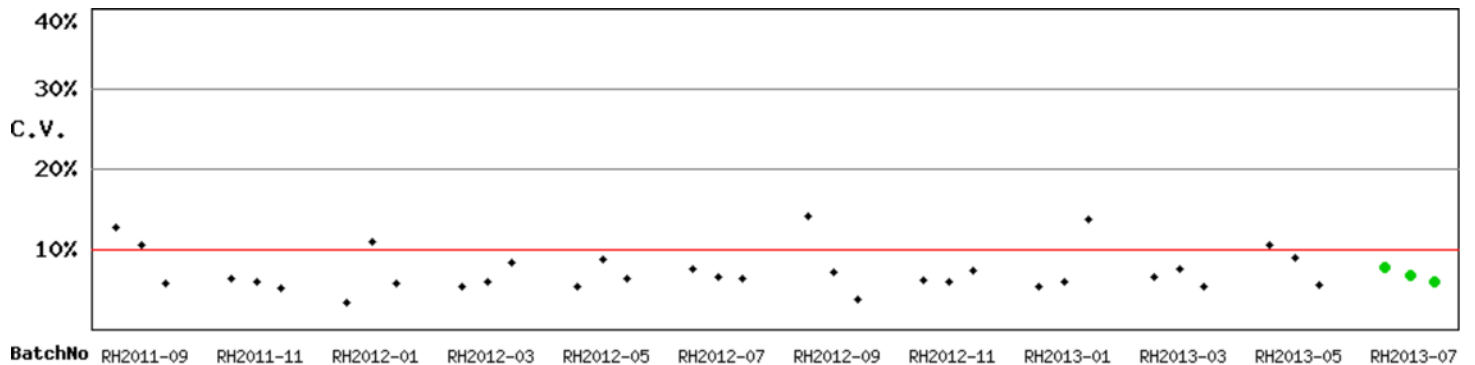
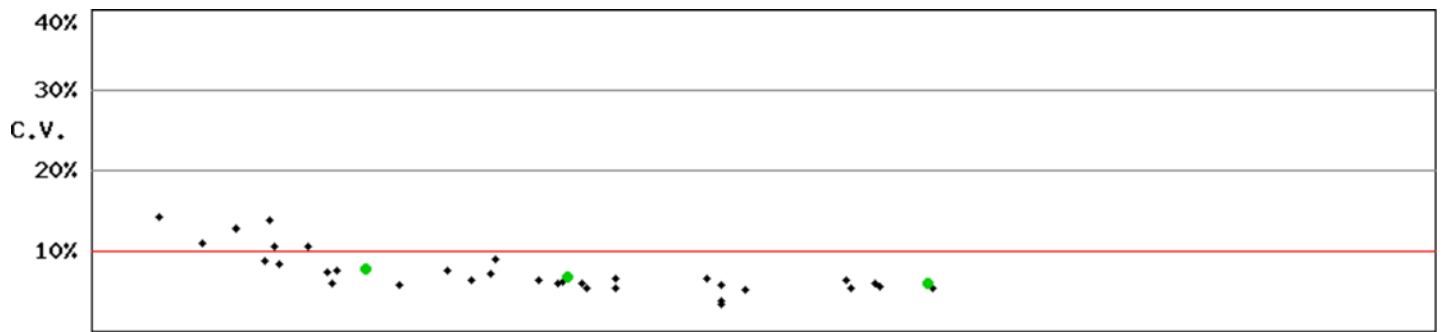


Fig RH-2.1

- Total participants' CV result plotted against G6PD activities



n: 36 Median of CV: 6.4% Mean of CV: 7.2% SD of CV: 2.6% Range of CV: 3.2%-14.2% (date: RH2011-09 to RH2013-07)

Fig RH-2.2

備註：1). 品管結果報告刊載於網際網路 <<http://g6pd.qap.tw>>

2). 若有任何問題請洽 預防醫學基金會 范美玲小姐。

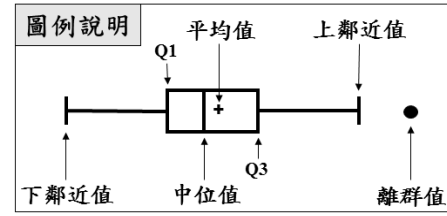
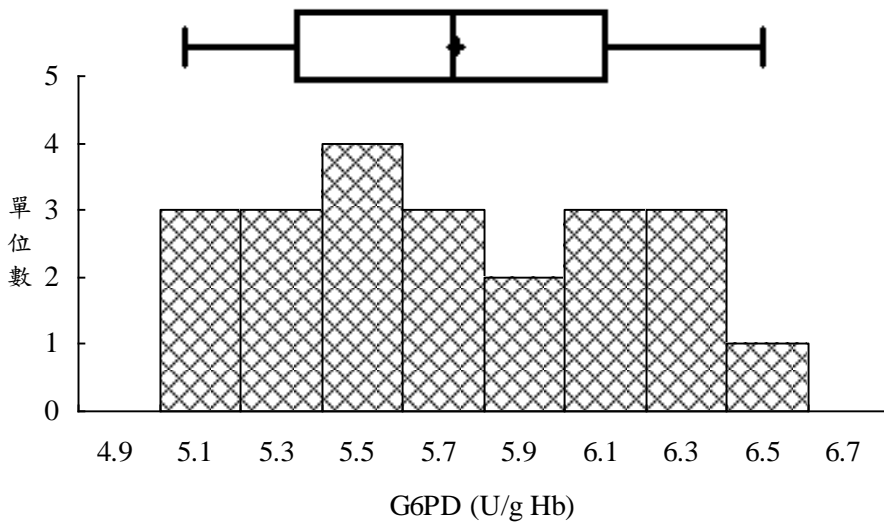
10699 台北郵政 26-624 信箱

電話：(02) 2703-6080

傳真：(02) 2703-6070

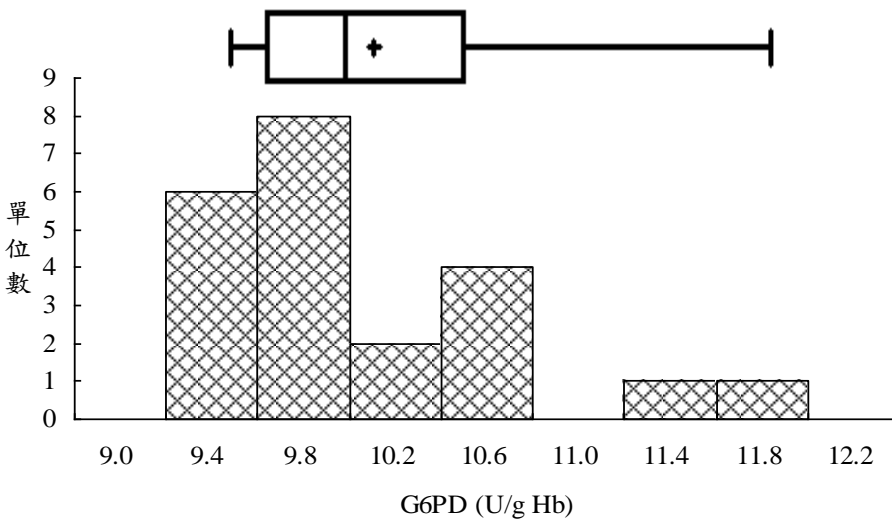
# G6PD 確認檢驗院際品管 G6PD 活性統計分佈圖

品管測試批次：RH2013-07



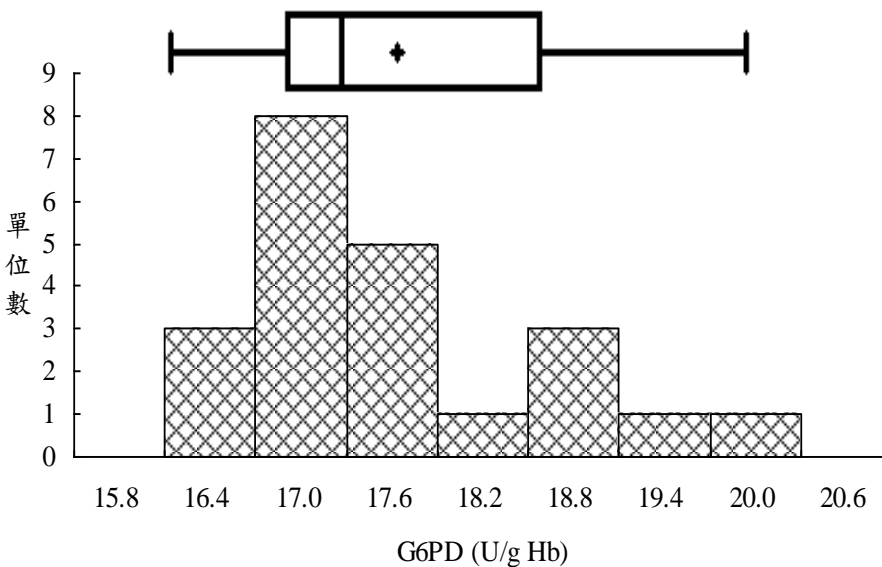
## 檢體 1

中位數 (Median) = 5.7 (n=22)  
 平均值 (Mean) = 5.7 (n=22)  
 標準差 (S.D.) = 0.4  
 參考值 (Ref. Value) = 5.7



## 檢體 2

中位數 (Median) = 9.8 (n=22)  
 平均值 (Mean) = 9.9 (n=22)  
 標準差 (S.D.) = 0.7  
 參考值 (Ref. Value) = 9.2



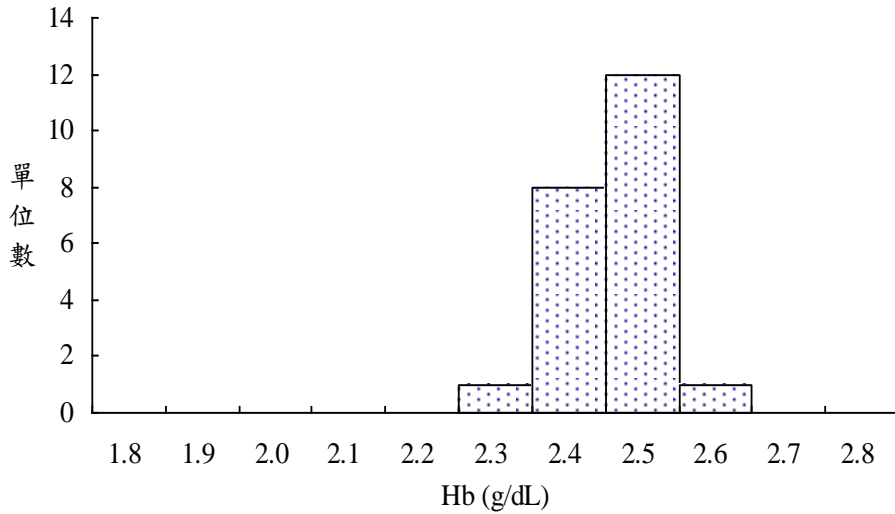
## 檢體 3

中位數 (Median) = 17.0 (n=22)  
 平均值 (Mean) = 17.4 (n=22)  
 標準差 (S.D.) = 1.0  
 參考值 (Ref. Value) = 17.9

Fig RH-3

# G6PD 確認檢驗院際品管 Hb 統計分佈圖

品管測試批次：RH2013-07



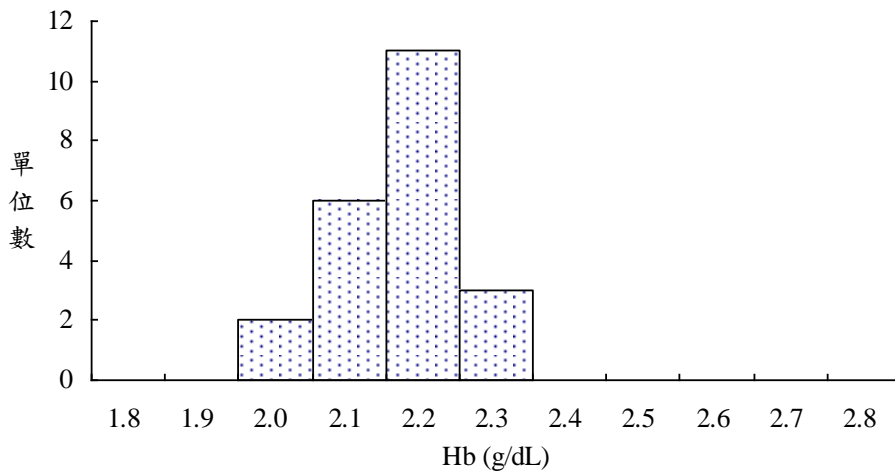
檢體 1

中位數 (Median) = 2.5 (n=22)

平均值 (Mean) = 2.5 (n=22)

標準差 (S.D.) = 0.1

參考值 (Ref. Value) = 2.4



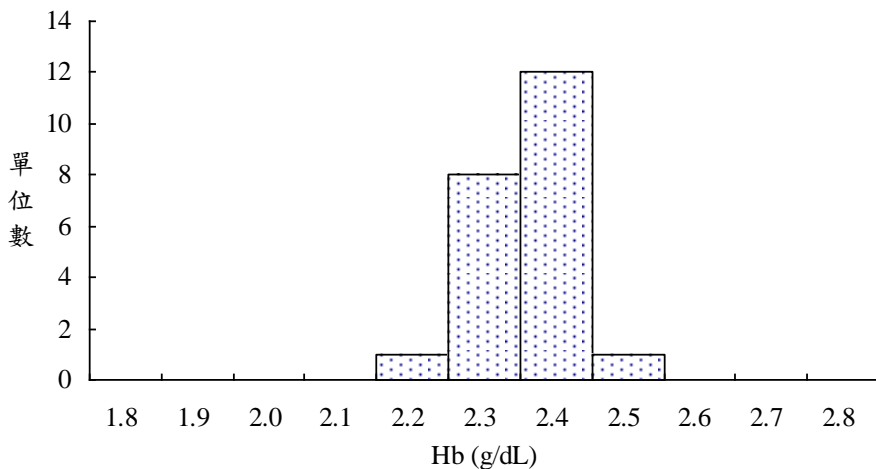
檢體 2

中位數 (Median) = 2.2 (n=22)

平均值 (Mean) = 2.2 (n=22)

標準差 (S.D.) = 0.1

參考值 (Ref. Value) = 2.2



檢體 3

中位數 (Median) = 2.4 (n=22)

平均值 (Mean) = 2.4 (n=22)

標準差 (S.D.) = 0.1

參考值 (Ref. Value) = 2.3

Fig RH-4

# 新生兒 G6PD 缺乏症篩檢檢驗及確認檢驗之品質保證

## External Quality Assurance (EQA) for Neonatal G6PD Screening

送檢批號：RH2013-07 檢體寄出日期：2013 年 07 月 01 日 報告回收截止日期：2013 年 07 月 08 日

歷年使用本次 [S2](#) 檢體之品管批次 ( n = 3 ; Survey / Sample No. ) :  
[RH2010-03/S3](#) ; [RH2012-11/S1](#) ; [RH2013-07/S2](#)

### 各實驗室內長期 G6PD 定量檢驗精密度 (中間精密度)

Lab	Survey : <a href="#">RH2013-07 / Sample 2</a>		Period : <a href="#">2010 ~ 2013<sup>4</sup></a>			
	U/gHb	SDI <sup>2</sup>	Mean	n	SD	CV
RH01	9.2	-0.1	9.3	3	1.0	10.8%
RH02	9.8	-0.5	10.1	3	0.6	5.9%
RH03	10.3	-0.2	10.4	3	0.6	5.8%
RH04	9.6	1.0	9.5	3	0.1	1.1%
RH06	9.6	0.0	9.6	3	0.3	3.1%
RH07	9.9	0.3	9.8	3	0.3	3.1%
RH08	9.3	-0.4	9.5	3	0.5	5.3%
RH09	10.4	1.0	9.8	3	0.6	6.1%
RH10	9.7	-0.7	10.1	3	0.6	5.9%
RH12	9.6	-1.0	9.9	3	0.3	3.0%
RH13	10.0	0.0	10	3	0.6	6.0%
RH14	9.8	0.5	9.6	3	0.4	4.2%
RH18	10.4	0.7	10	3	0.6	6.0%
RH19	9.8	-0.8	10.3	3	0.6	5.8%
A0189	11.8	1.1	10.7	3	1.0	9.3%
A0203	9.3	-1.3	9.8	3	0.4	4.1%
G026	10.4	1.0	9.9	3	0.5	5.1%
CL001	9.2	0.0	9.2	3	0.4	4.3%
CL002	9.4	-0.4	9.8	3	0.9	9.2%
B001	9.2	-0.2	9.5	3	1.9	20.0%
CL014	11.3	-	11.3	1	-	-
CL015B	9.6	-	9.6	1	-	-
Total participating laboratories = 22						
Median	9.8	-0.1	9.8		0.6	5.8%
Range	9.2 ~ 11.8	-1.3 ~ 1.1	9.2 ~ 11.3		0.1 ~ 1.9	1.1% ~ 20.0%

1). ████████ : Outlier (this result has been dropped and was not included in calculation of Mean, SD and CV).

2). Standard Deviation Index (SDI) = (Individual Result - Individual Mean) / Individual SD

3). Survey / Sample No. : [RH2010-03/S3](#) ; [RH2012-11/S1](#) ; [RH2013-07/S2](#)

\* 中間精密度: Intermediate Measurement Precision ; ISO 3534-2:2006

若有任何疑問,歡迎來電(函)聯繫或指教



地址：10699 台北郵政 26-624 號信箱 電話：(02)2703-6080

e-mail : [g6pd@g6pd.tw](mailto:g6pd@g6pd.tw) 傳真：(02)2703-6070