

External Quality Assurance (EQA) of G6PD Quantitative Test

Survey No. : RH2013-11

Sample sent on : 2013/11/04

Reporting deadline : 2013/11/11

Sample sent : [15 set](#)

Results reported (%) : 15 (100%)

- | | |
|---|---|
| <p>1. Summary report on this EQA survey</p> <p>2. The distribution of G6PD reported in this survey</p> <p>3. The distribution of Hb reported in this survey</p> | <p>4. Long term observation of inter laboratory CV vs. surveys</p> <p>5. Long term observation of inter laboratory CV vs. G6PD activities</p> <p>6. Deviation graph for individual laboratory</p> |
|---|---|

Referral Hosp. G6PD and Hemoglobin(Hb) Quantitative Test Results

Lab	Referral Hosp.	Receive (day)	Report (day)	S 1		S 2		S 3		Hb 1		Hb 2		Hb 3	
				(U/gHb)	SDI	(U/gHb)	SDI	(U/gHb)	SDI	(g/dL)	SDI	(g/dL)	SDI	(g/dL)	SDI
F01	F01	0	1	10.6	-0.6	2.2	-0.2	9.1	-0.3	2.3	0.0	2.5	0.0	2.1	0.0
F02	F02	1	1	13.4	1.1	2.7	1.0	10.5	1.0	2.3	0.0	2.6	0.5	2.2	0.5
F03	F03	0	4	10.4	-0.8	0.4	-4.8	7.4	-1.8	2.2	-1.0	2.3	-1.0	1.9	-1.0
F04	F04	1	4	10.3	-0.8	2.1	-0.5	8.4	-0.9	2.5	2.0	2.7	1.0	2.3	1.0
F05	F05	1	3	11.7	0.1	2.4	0.3	9.7	0.3	2.2	-1.0	2.5	0.0	2.1	0.0
F06	F06	2	4	12.4	0.5	2.1	-0.5	10.0	0.5	2.2	-1.0	2.4	-0.5	2.1	0.0
F07	F07	1	9	11.4	-0.1	2.2	-0.2	9.3	-0.1	2.4	1.0	2.7	1.0	2.2	0.5
F08	F08	1	4	12.2	0.4	2.8	1.3	10.0	0.5	2.2	-1.0	2.4	-0.5	1.9	-1.0
F09	F09	1	7	15.5	2.4	3.3	2.5	11.7	2.1	1.6	-7.0	2.0	-2.5	1.8	-1.5
F10	F10	1	2	12.3	0.4	2.4	0.3	10.4	0.9	2.1	-2.0	2.5	0.0	2.0	-0.5
F11	F11	1	9	11.6	0.0	2.4	0.3	9.8	0.4	2.3	0.0	2.5	0.0	2.1	0.0
F12	F12	1	7	11.3	-0.2	2.2	-0.2	9.3	-0.1	2.6	3.0	2.8	1.5	2.4	1.5
F13	F13	1	3	11.7	0.1	2.2	-0.2	9.8	0.4	2.3	0.0	2.5	0.0	2.1	0.0
F14	F14	1	7	8.8	-1.8	1.8	-1.3	7.6	-1.6	2.5	2.0	3.0	2.5	2.5	2.0
F15	F15	2	3	10.1	-0.9	1.9	-1.0	8.4	-0.9	2.4	1.0	2.7	1.0	2.2	0.5

Total participating laboratories = 15

Median	-	1	4	11.6	2.2	9.7	2.3	2.5	2.1
Range	-	0-2	1-9	8.8-15.5	0.4-3.3	7.4-11.7	1.6-2.6	2.0-3.0	1.8-2.5
n for Mean	-	-	-	15	14	15	14	15	15
Mean	-	-	-	11.6	2.3	9.4	2.3	2.5	2.1
S.D.	-	-	-	1.6	0.4	1.1	0.1	0.2	0.2
C.V.	-	-	-	13.5%	16.6%	12.0%	6.1%	9.1%	8.8%
Reference	-	-	-	16.4	3.1	12.5	2.2	2.8	2.2

- Note:
- 1). : Outlier (this result has been dropped and was not included in calculation of Mean, SD and CV).
 - 2). Standard Deviation Index (SDI) = (Individual Result - Mean) / SD
 - 3). The reference values were determined by using [Trinity Biotech 345-UV](#) reagent at the QC reference Lab.

[Ordered by Referral Hosp.](#)



Newborn Screening QA Program
Preventive Medicine Foundation



Newborn Screening Reference Center
National Institutes of Health



University of the Philippines

P.O. Box 26-624, Taipei, Taiwan 10699

Tel : + 886-2-2703-6080; j@Fax : +886-2-2703-6070

g6pd@g6pd.tw

625 Pedro Gil St., Ermita, Manila 1000, Philippines

Fax : + 632-522-4396;

info@nsrc-nih.org.ph

Long Term Observation of G6PD QA Survey for Confirmatory Hosp.

Survey No : RH2013-11 (in green ●)

- Total participants' CV result plotted against surveys

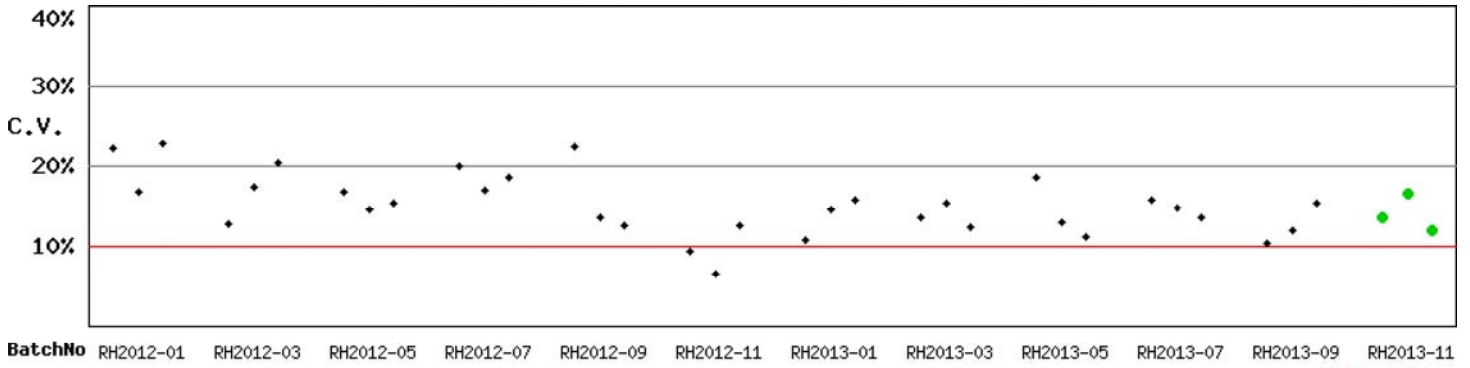
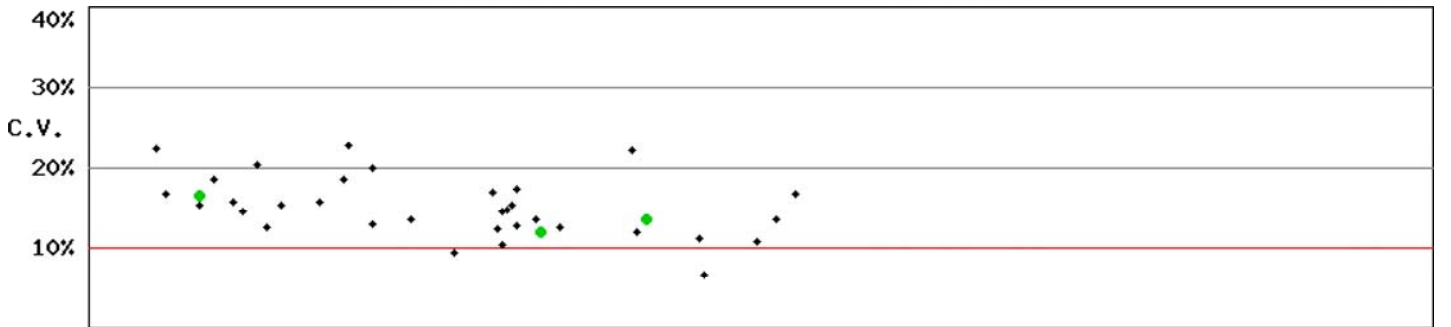


Fig RH-2.1

- Total participants' CV result plotted against G6PD activities



n: 36 Median of CV: 14.7% Mean of CV: 15.0% SD of CV: 3.7% Range of CV: 6.6%-22.8% (date: RH2012-01 to RH2013-11)

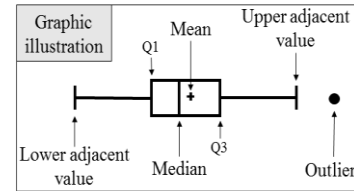
Fig RH-2.2

Kwang-Jen Hsiao, Ph.D.
Preventive Medicine Foundation
P.O. Box 26-624
Taipei, Taiwan, 10699

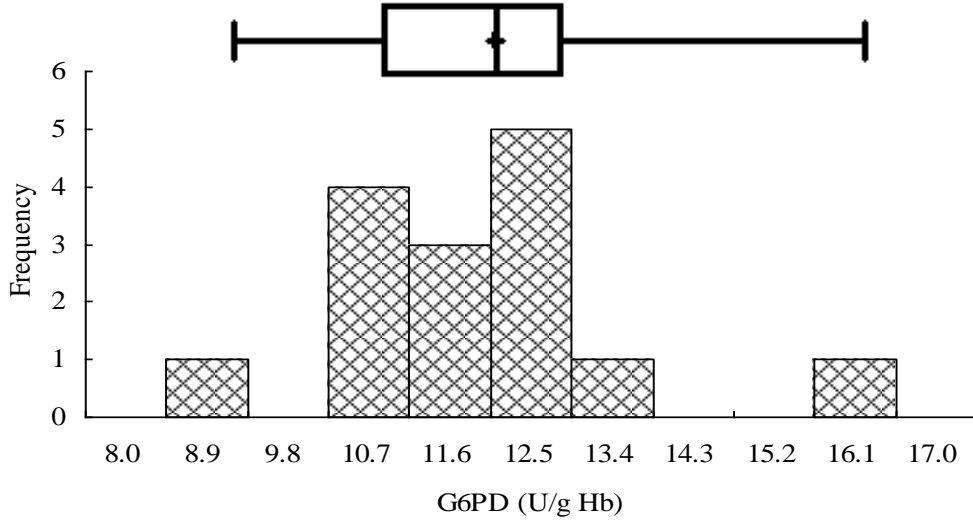
Tel : +886-2-2703-6080
Fax : +886-2-2703-6070
E-mail : g6pd@g6pd.tw
URL : <http://eqa.g6pd.tw>

External Quality Assurance -G6PD

Survey No :RH2013-11



● Outlier (out of 3 SD)



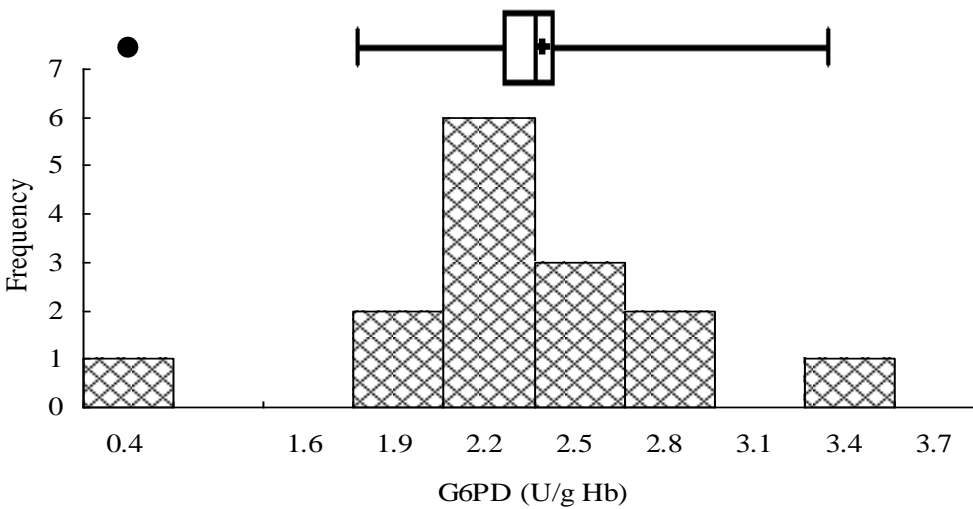
Sample 1

Median = 11.6 (n = 15)

Mean = 11.6 (n = 15)

S.D. = 1.6

Ref. Value* = 16.4



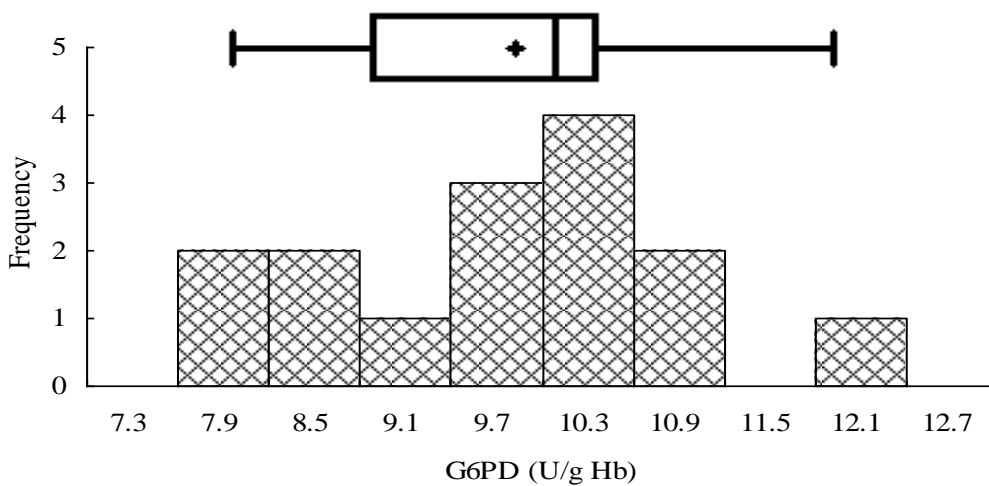
Sample 2

Median = 2.2 (n = 15)

Mean = 2.3 (n = 14)

S.D. = 0.4

Ref. Value* = 3.1



Sample 3

Median = 9.7 (n = 15)

Mean = 9.4 (n = 15)

S.D. = 1.1

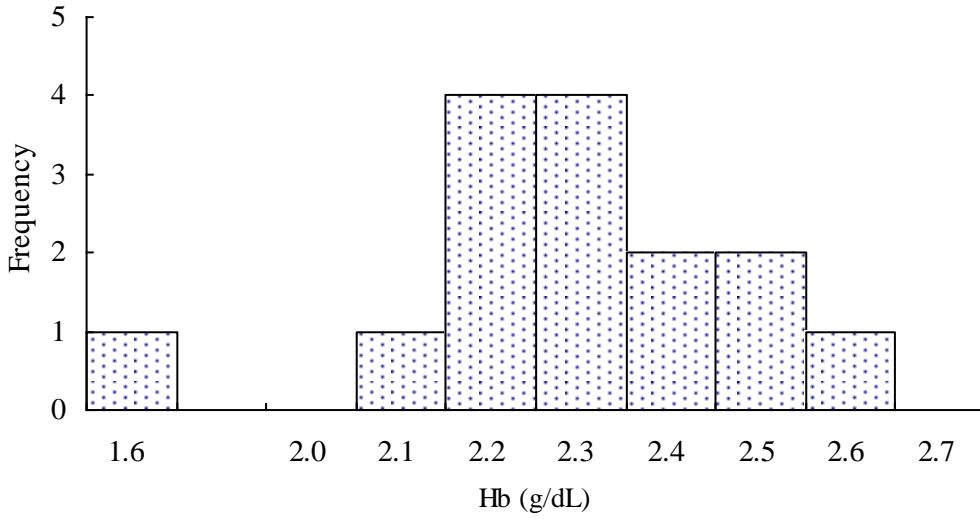
Ref. Value* = 12.5

* The reference values were determined by using Trinity Biotech 345-UV reagent at the QC reference Lab.

Fig PHIQ-3

External Quality Assurance-Hb

Survey No : RH2013-11



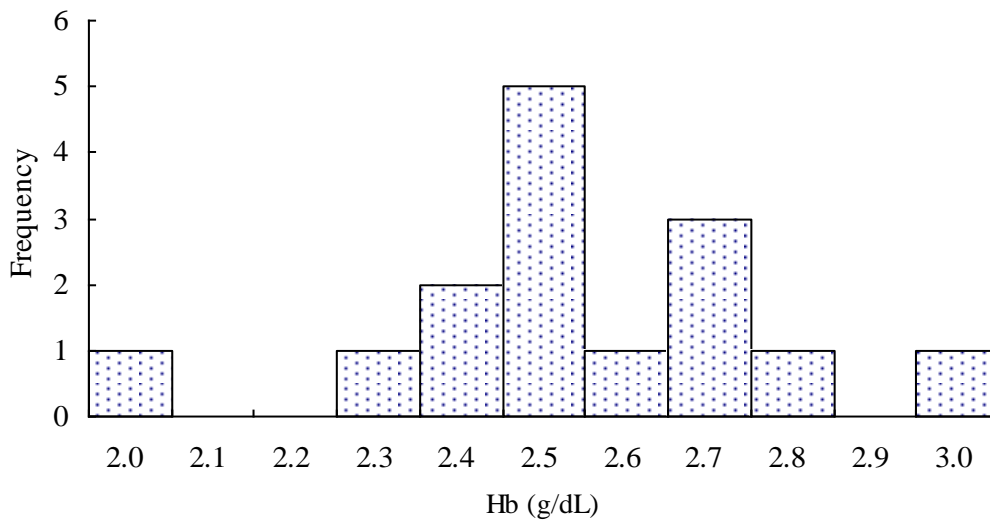
Sample 1

Median = 2.3 (n = 15)

Mean = 2.3 (n = 14)

S.D. = 0.1

Ref. Value = 2.2



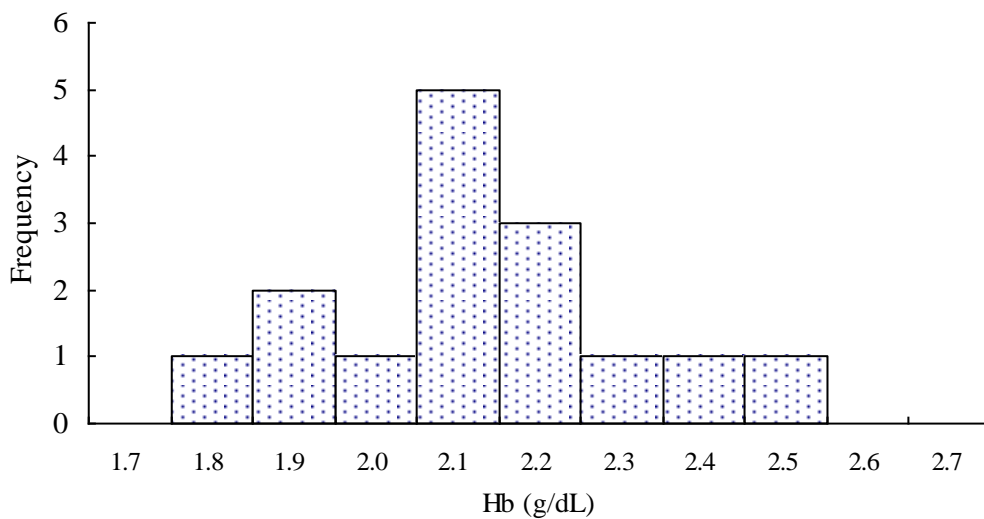
Sample 2

Median = 2.5 (n = 15)

Mean = 2.5 (n = 15)

S.D. = 0.2

Ref. Value = 2.8



Sample 3

Median = 2.1 (n = 15)

Mean = 2.1 (n = 15)

S.D. = 0.2

Ref. Value = 2.2

Fig PHIQ-4